

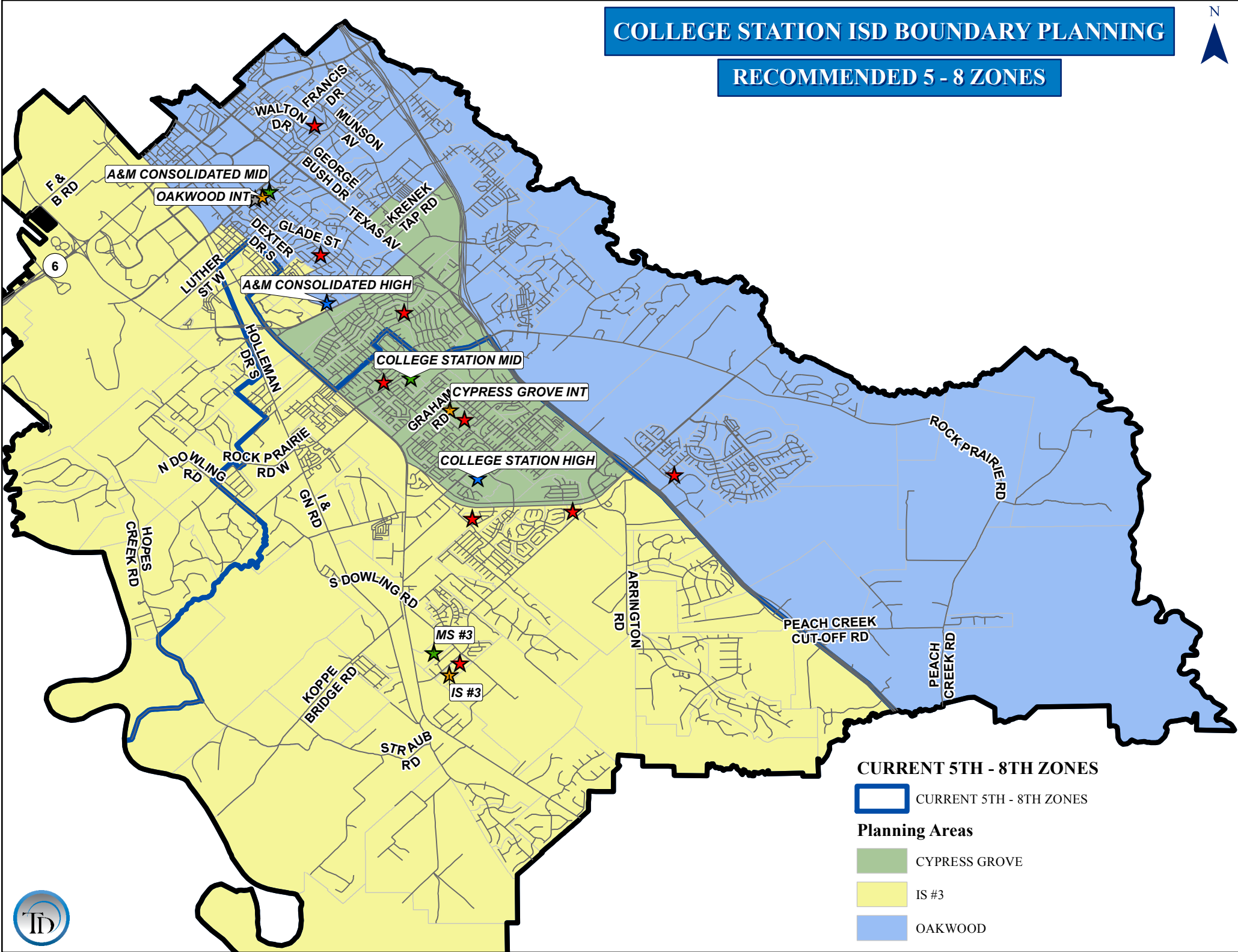
5/31/16 Option 1

Nantucket to **PT/MS #3/CSHS**

Continuity

COLLEGE STATION ISD BOUNDARY PLANNING


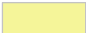

RECOMMENDED 5 - 8 ZONES



CURRENT 5TH - 8TH ZONES

 CURRENT 5TH - 8TH ZONES

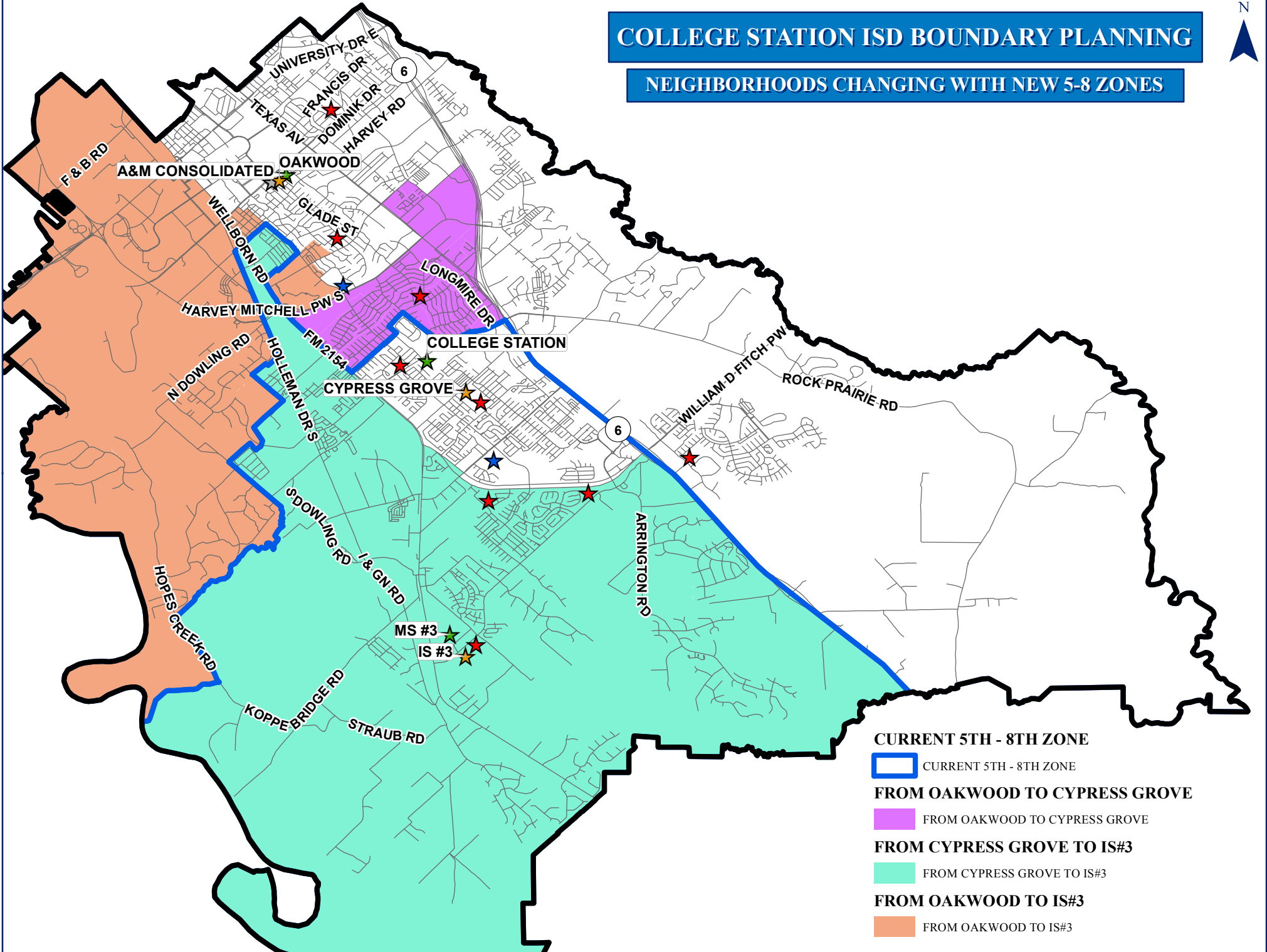
Planning Areas

-  CYPRESS GROVE
-  IS #3
-  OAKWOOD



COLLEGE STATION ISD BOUNDARY PLANNING

NEIGHBORHOODS CHANGING WITH NEW 5-8 ZONES



COLLEGE STATION ISD

Recommended Intermediate & Middle School Forecast & Grade Report

SCHOOL	CAPACITY	2015/16	2016/17	2017/18	2018/19	2019/20	2020/21	2021/22	2022/23	2023/24	2024/25	2025/26
CYPRESS GROVE	920	741	755	786	852	868	859	855	870	875	882	870
IS #3	925	582	620	677	753	776	788	794	835	858	888	890
OAKWOOD	920	604	605	651	669	702	686	684	685	700	714	721
TOTAL	2,765	1,927	1,980	2,114	2,274	2,346	2,333	2,333	2,390	2,433	2,484	2,481

SCHOOL	5	6	TOTAL	CAPACITY	UTILIZATION	ED	%ED
CYPRESS GROVE	372	369	741	920	80.5%	260	35.1%
IS #3	307	275	582	925	62.9%	212	36.4%
OAKWOOD	302	302	604	920	65.7%	222	36.8%
TOTAL	981	946	1,927	2,765	69.7%	694	36.0%

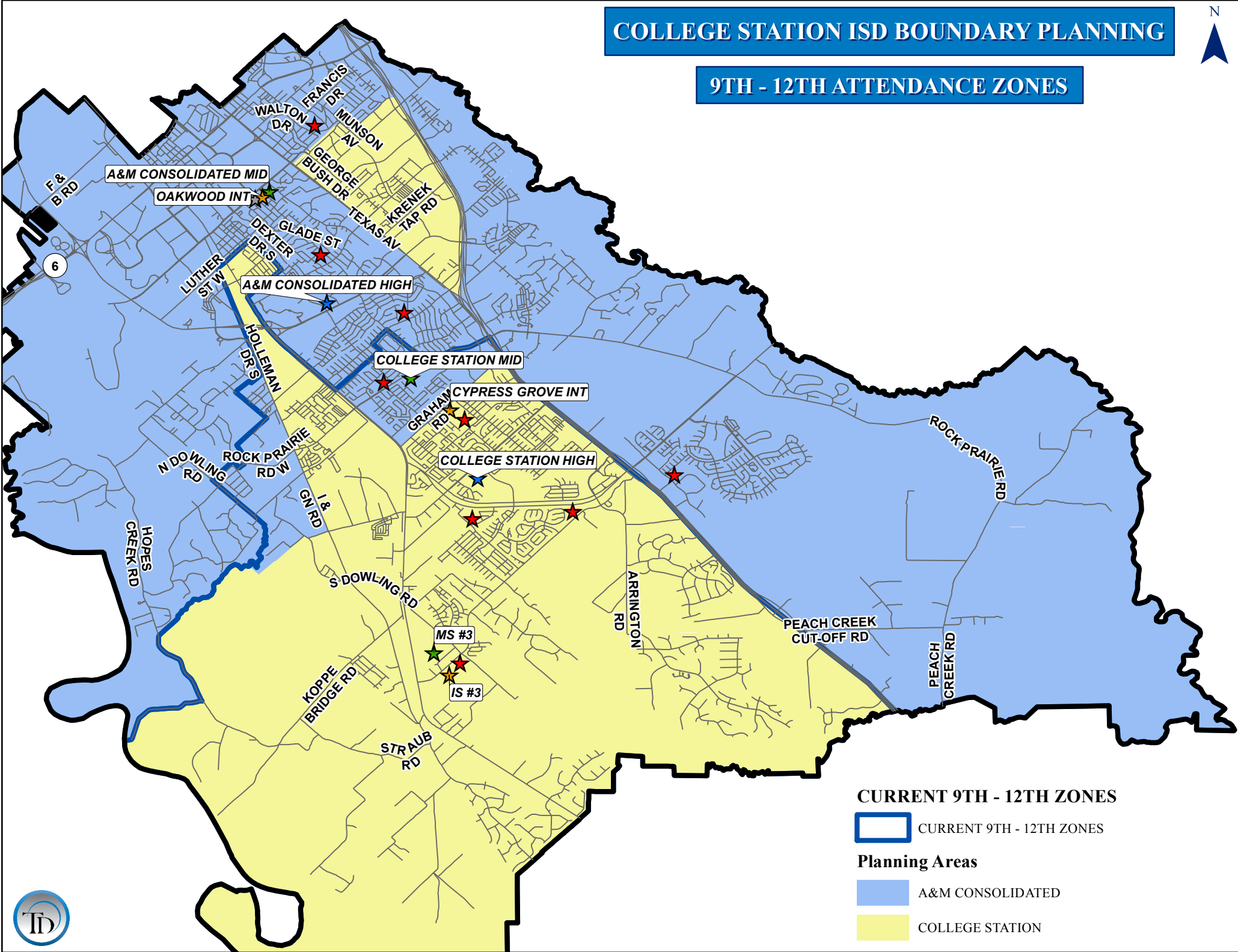
SCHOOL	CAPACITY	2015/16	2016/17	2017/18	2018/19	2019/20	2020/21	2021/22	2022/23	2023/24	2024/25	2025/26
A&M CONSOLIDATED	920	570	561	586	625	654	694	754	718	715	727	718
COLLEGE STATION	940	708	714	736	777	811	865	891	881	871	891	895
MS #3	925	542	602	678	718	815	912	936	939	958	1,002	1,018
TOTAL	2,785	1,820	1,877	2,000	2,120	2,280	2,471	2,581	2,538	2,544	2,620	2,631

SCHOOL	7	8	7TH-8TH	CAPACITY	UTILIZATION	ED	%ED
A&M CONSOLIDATED	294	276	570	920	62.0%	205	36.0%
COLLEGE STATION	364	344	708	940	75.3%	232	32.8%
MS #3	283	259	542	925	58.6%	180	33.2%
TOTAL	941	879	1,820	2,785	65.4%	617	33.9%

COLLEGE STATION ISD BOUNDARY PLANNING



9TH - 12TH ATTENDANCE ZONES



CURRENT 9TH - 12TH ZONES

 CURRENT 9TH - 12TH ZONES

Planning Areas

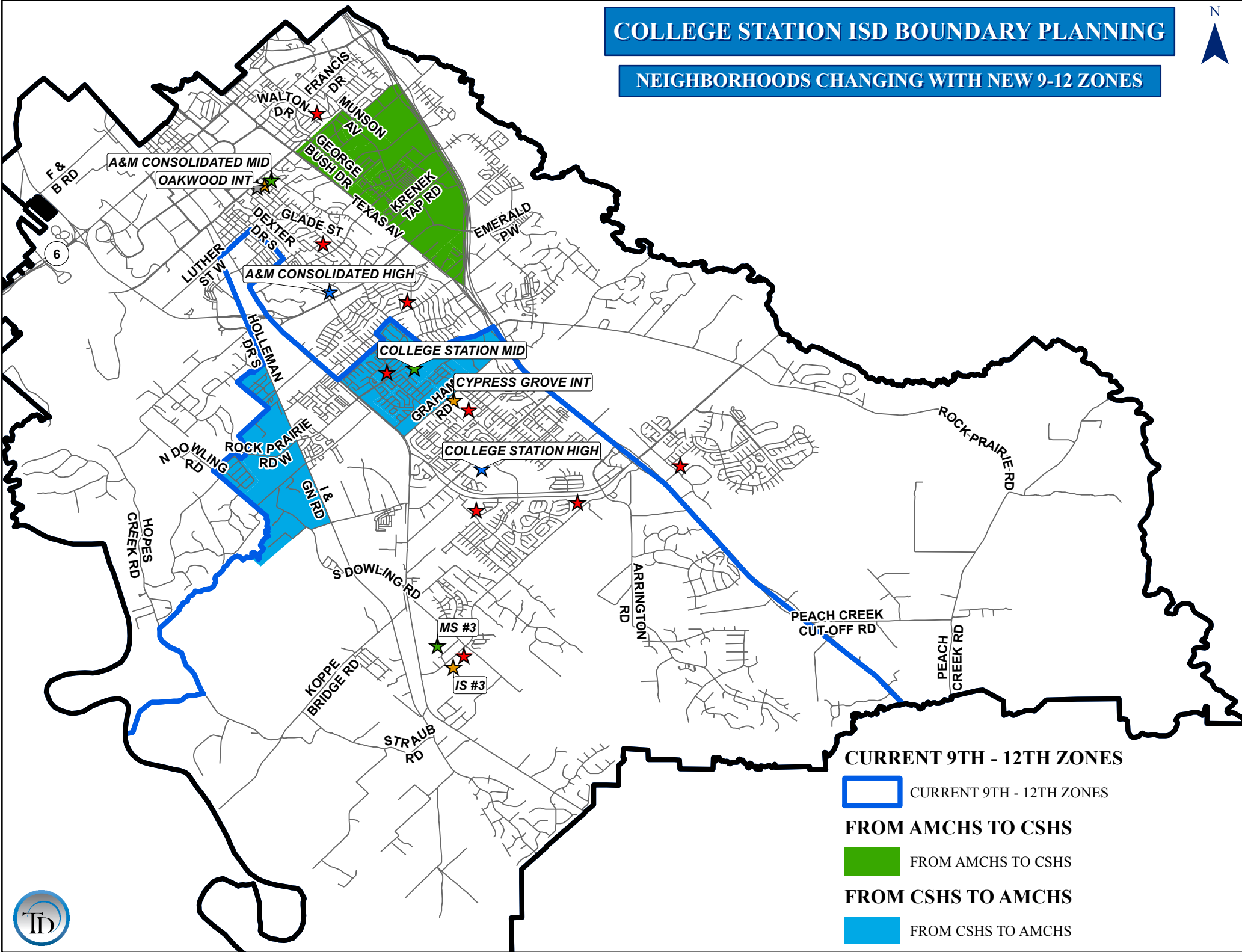
 A&M CONSOLIDATED

 COLLEGE STATION



COLLEGE STATION ISD BOUNDARY PLANNING

NEIGHBORHOODS CHANGING WITH NEW 9-12 ZONES



CURRENT 9TH - 12TH ZONES

 CURRENT 9TH - 12TH ZONES

FROM AMCHS TO CSHS

 FROM AMCHS TO CSHS

FROM CSHS TO AMCHS

 FROM CSHS TO AMCHS



COLLEGE STATION ISD

Recommended High School Grade Report

SCHOOL	8	9	10	11	12	8TH-11TH	9TH-12TH	CAPACITY	UTILIZATION	ED	%ED
A&M CONSOLIDATED	453	505	439	463	430	1,860	1,837	2,400	76.5%	543	29.6%
COLLEGE STATION	426	485	504	407	351	1,822	1,747	1,800	97.1%	507	29.0%
TOTAL	879	990	943	870	781	3,682	3,584	4,200	85.3%	1,050	29.3%

COLLEGE STATION ISD

Recommended High School Forecast Report

SCHOOL	2015/16	2016/17	2017/18	2018/19	2019/20	2020/21	2021/22	2022/23	2023/24	2024/25	2025/26
A&M CONSOLIDATED	1,786	1,765	1,965	2,026	2,110	2,216	2,335	2,487	2,621	2,739	2,791
COLLEGE STATION	1,747	1,859	1,873	1,982	2,141	2,289	2,477	2,652	2,804	2,934	3,029
TOTAL	3,531	3,624	3,838	4,008	4,251	4,505	4,812	5,139	5,425	5,673	5,820

MIDDLE SCHOOL FEEDER REPORT

MIDDLE SCHOOL TO HIGH SCHOOL ZONE	7th GRADE	8th GRADE	7 - 8 TOTAL	7th GRADE %	8th GRADE %	7-8 GRADE %
A&M CONSOLIDATED MIDDLE	294	276	570			
A&M CONSOLIDATED HIGH	251	229	480	85%	83%	84%
COLLEGE STATION HIGH	43	47	90	15%	17%	16%
COLLEGE STATION MIDDLE	364	344	708			
A&M CONSOLIDATED HIGH	168	170	338	46%	49%	48%
COLLEGE STATION HIGH	196	174	370	54%	51%	52%
MS #3	283	259	542			
A&M CONSOLIDATED HIGH	44	54	98	16%	21%	18%
COLLEGE STATION HIGH	239	205	444	84%	79%	82%

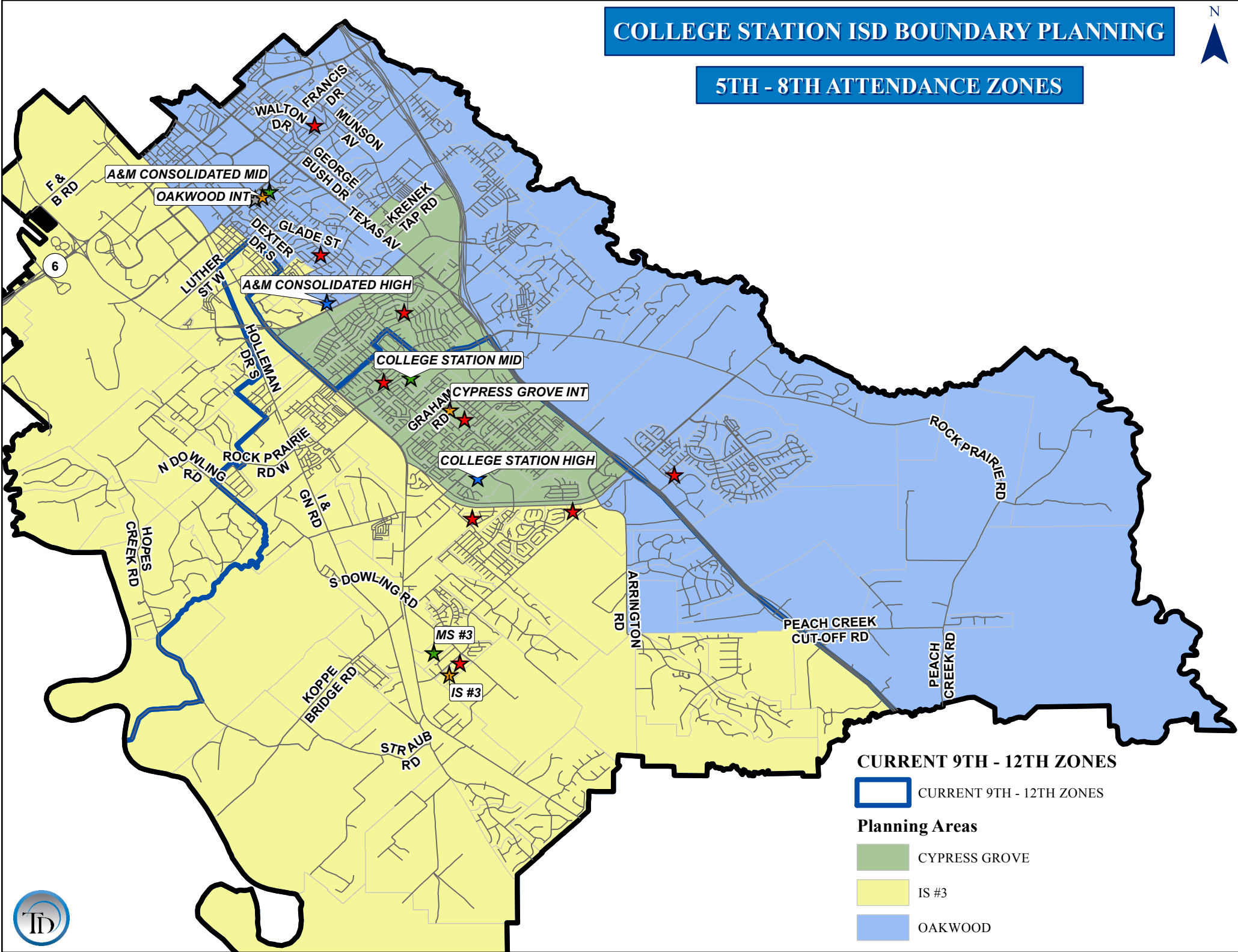
**5/31/16 Option 2
(Initial Recommendation)**

Nantucket to **OW/AMCMS** then to
CSHS

COLLEGE STATION ISD BOUNDARY PLANNING




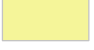

5TH - 8TH ATTENDANCE ZONES



CURRENT 9TH - 12TH ZONES

 CURRENT 9TH - 12TH ZONES

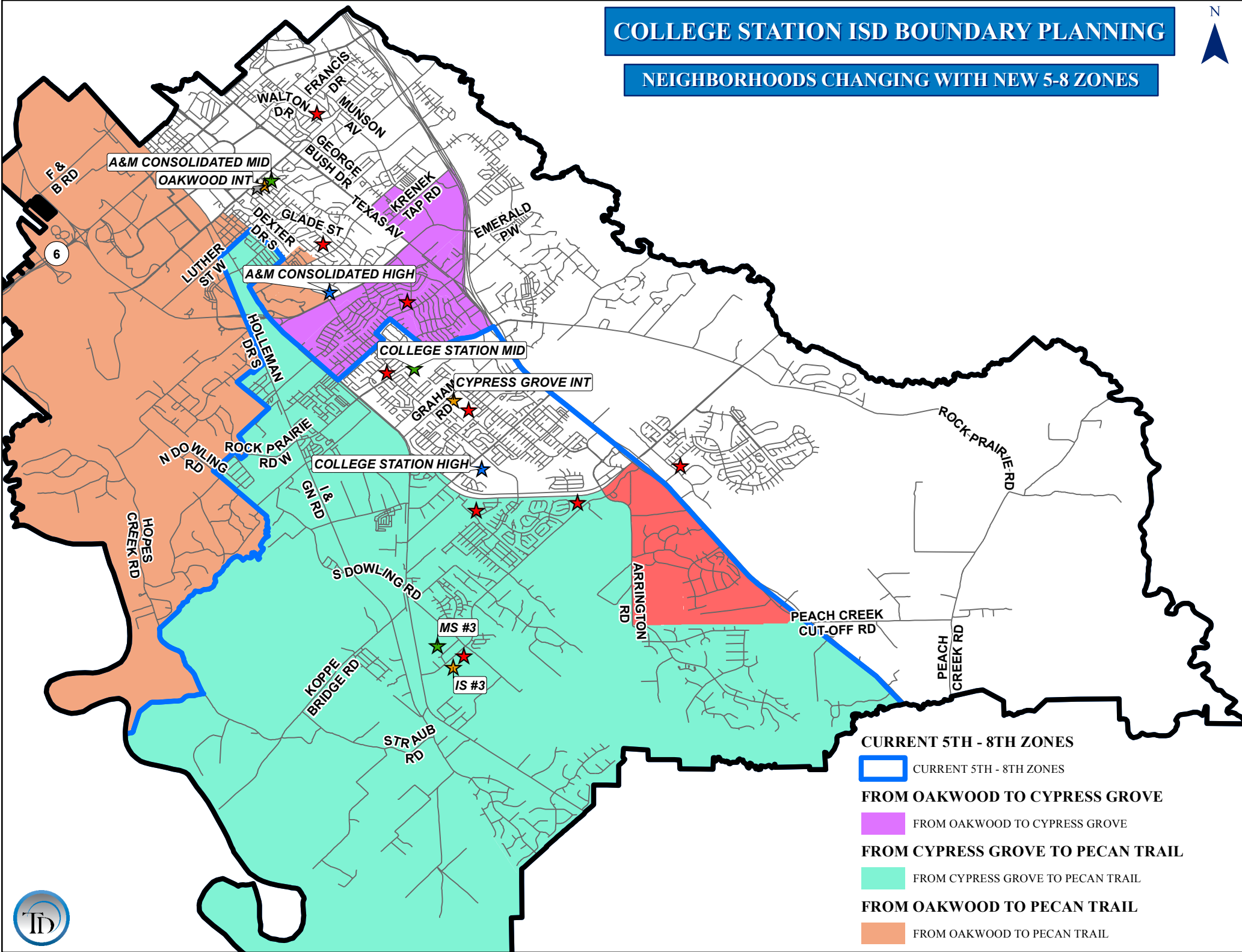
Planning Areas

-  CYPRESS GROVE
-  IS #3
-  OAKWOOD








COLLEGE STATION ISD BOUNDARY PLANNING

NEIGHBORHOODS CHANGING WITH NEW 5-8 ZONES



CURRENT 5TH - 8TH ZONES

-  CURRENT 5TH - 8TH ZONES
-  FROM OAKWOOD TO CYPRESS GROVE
-  FROM CYPRESS GROVE TO PECAN TRAIL
-  FROM OAKWOOD TO PECAN TRAIL
-  FROM OAKWOOD TO PECAN TRAIL



COLLEGE STATION ISD

Intermediate & Middle School School Forecast Report/Grade Report

SCHOOL	CAPACITY	2015/16	2016/17	2017/18	2018/19	2019/20	2020/21	2021/22	2022/23	2023/24	2024/25	2025/26
CYPRESS GROVE	920	741	755	786	852	868	859	855	870	875	882	870
IS #3	925	563	601	658	732	755	767	773	813	836	866	868
OAKWOOD	920	623	624	670	690	723	707	705	707	722	736	743
TOTAL	2,765	1,927	1,980	2,114	2,274	2,346	2,333	2,333	2,390	2,433	2,484	2,481

SCHOOL	5	6	TOTAL	CAPACITY	UTILIZATION	ED	%ED
CYPRESS GROVE	372	369	741	920	80.5%	260	35.1%
IS #3	298	265	563	925	60.9%	212	37.7%
OAKWOOD	311	312	623	920	67.7%	222	35.6%
TOTAL	981	946	1,927	2,765	69.7%	694	36.0%

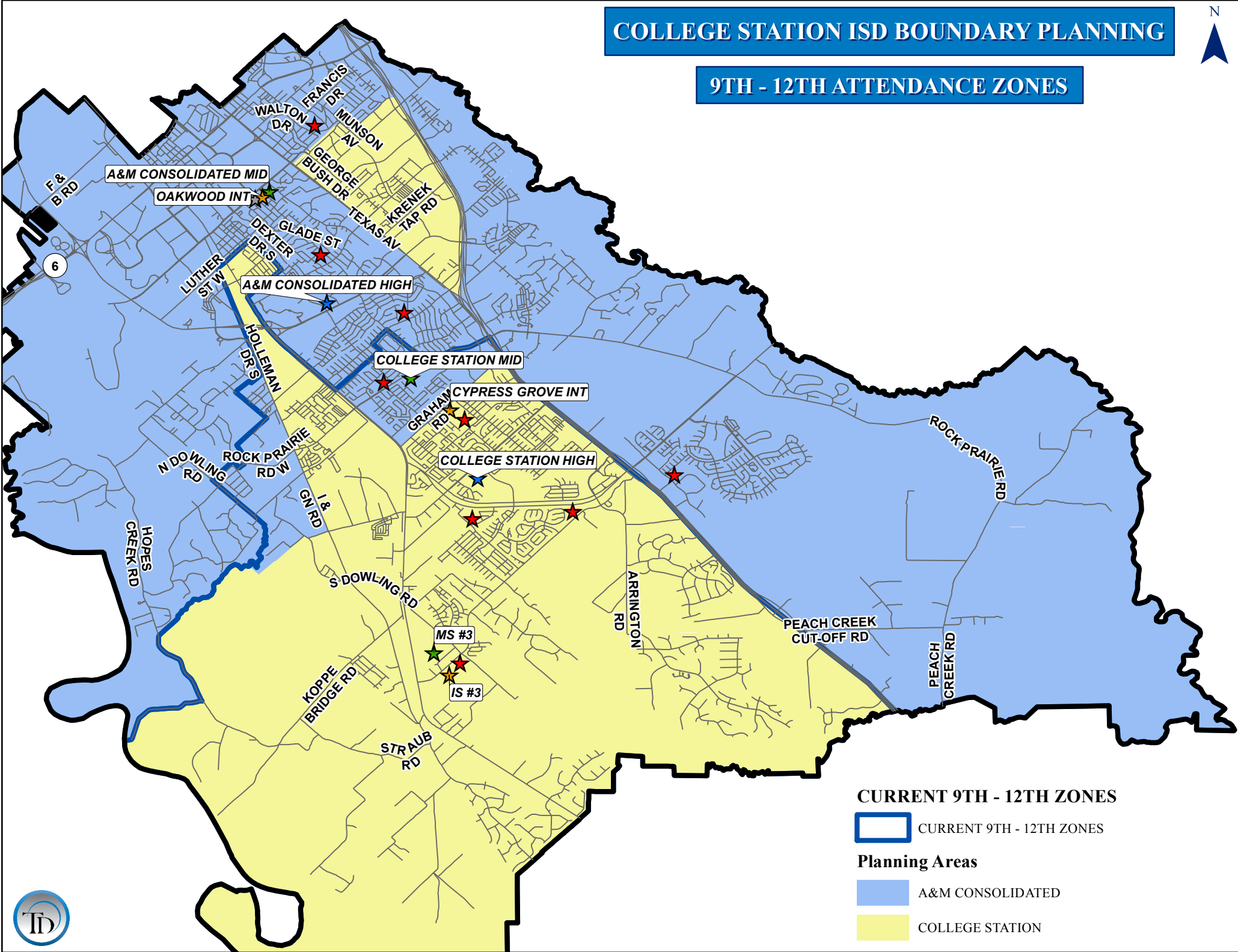
SCHOOL	CAPACITY	2015/16	2016/17	2017/18	2018/19	2019/20	2020/21	2021/22	2022/23	2023/24	2024/25	2025/26
A&M CONSOLIDATED	920	594	586	612	652	684	727	787	751	748	761	752
COLLEGE STATION	940	708	714	736	777	811	865	891	881	871	891	895
MS #3	925	518	577	652	691	785	879	903	906	925	968	984
TOTAL	2,785	1,820	1,877	2,000	2,120	2,280	2,471	2,581	2,538	2,544	2,620	2,631

SCHOOL	7	8	7TH-8TH	CAPACITY	UTILIZATION	ED	%ED
A&M CONSOLIDATED	309	285	594	920	64.6%	207	34.8%
COLLEGE STATION	364	344	708	940	75.3%	232	32.8%
MS #3	268	250	518	925	56.0%	178	34.4%
TOTAL	941	879	1,820	2,785	65.4%	617	33.9%

COLLEGE STATION ISD BOUNDARY PLANNING



9TH - 12TH ATTENDANCE ZONES



CURRENT 9TH - 12TH ZONES

 CURRENT 9TH - 12TH ZONES

Planning Areas

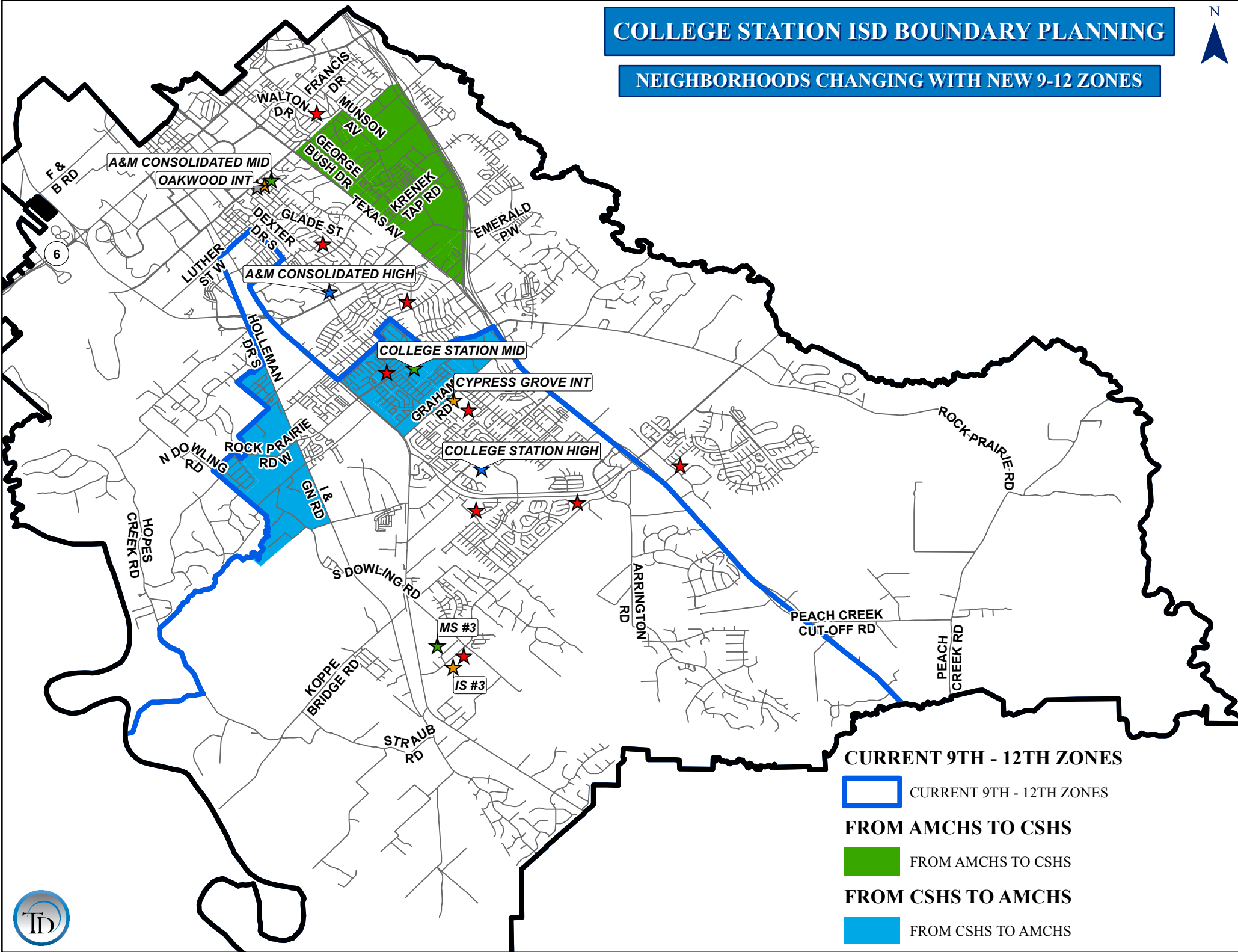
 A&M CONSOLIDATED

 COLLEGE STATION



COLLEGE STATION ISD BOUNDARY PLANNING

NEIGHBORHOODS CHANGING WITH NEW 9-12 ZONES



CURRENT 9TH - 12TH ZONES

 CURRENT 9TH - 12TH ZONES

FROM AMCHS TO CSHS

 FROM AMCHS TO CSHS

FROM CSHS TO AMCHS

 FROM CSHS TO AMCHS



COLLEGE STATION ISD

Recommended High School Grade Report

SCHOOL	8	9	10	11	12	8TH-11TH	9TH-12TH	CAPACITY	UTILIZATION	ED	%ED
A&M CONSOLIDATED	453	505	439	463	430	1,860	1,837	2,400	76.5%	543	29.6%
COLLEGE STATION	426	485	504	407	351	1,822	1,747	1,800	97.1%	507	29.0%
TOTAL	879	990	943	870	781	3,682	3,584	4,200	85.3%	1,050	29.3%

COLLEGE STATION ISD

Recommended High School Forecast Report

SCHOOL	2015/16	2016/17	2017/18	2018/19	2019/20	2020/21	2021/22	2022/23	2023/24	2024/25	2025/26
A&M CONSOLIDATED	1,786	1,765	1,965	2,026	2,110	2,216	2,335	2,487	2,621	2,739	2,791
COLLEGE STATION	1,747	1,859	1,873	1,982	2,141	2,289	2,477	2,652	2,804	2,934	3,029
TOTAL	3,531	3,624	3,838	4,008	4,251	4,505	4,812	5,139	5,425	5,673	5,820

MIDDLE SCHOOL FEEDER REPORT

MIDDLE SCHOOL TO HIGH SCHOOL ZONE	7th GRADE	8th GRADE	7 - 8 TOTAL	7th GRADE %	8th GRADE %	7-8 GRADE %
A&M CONSOLIDATED MIDDLE	309	285	594			
A&M CONSOLIDATED HIGH	251	229	480	81%	80%	81%
COLLEGE STATION HIGH	58	56	114	19%	20%	19%
COLLEGE STATION MIDDLE						
COLLEGE STATION MIDDLE	364	344	708			
A&M CONSOLIDATED HIGH	168	170	338	46%	49%	48%
COLLEGE STATION HIGH	196	174	370	54%	51%	52%
MS #3						
MS #3	268	250	518			
A&M CONSOLIDATED HIGH	44	54	98	16%	22%	19%
COLLEGE STATION HIGH	224	196	420	84%	78%	81%

9/12/16 Option 3

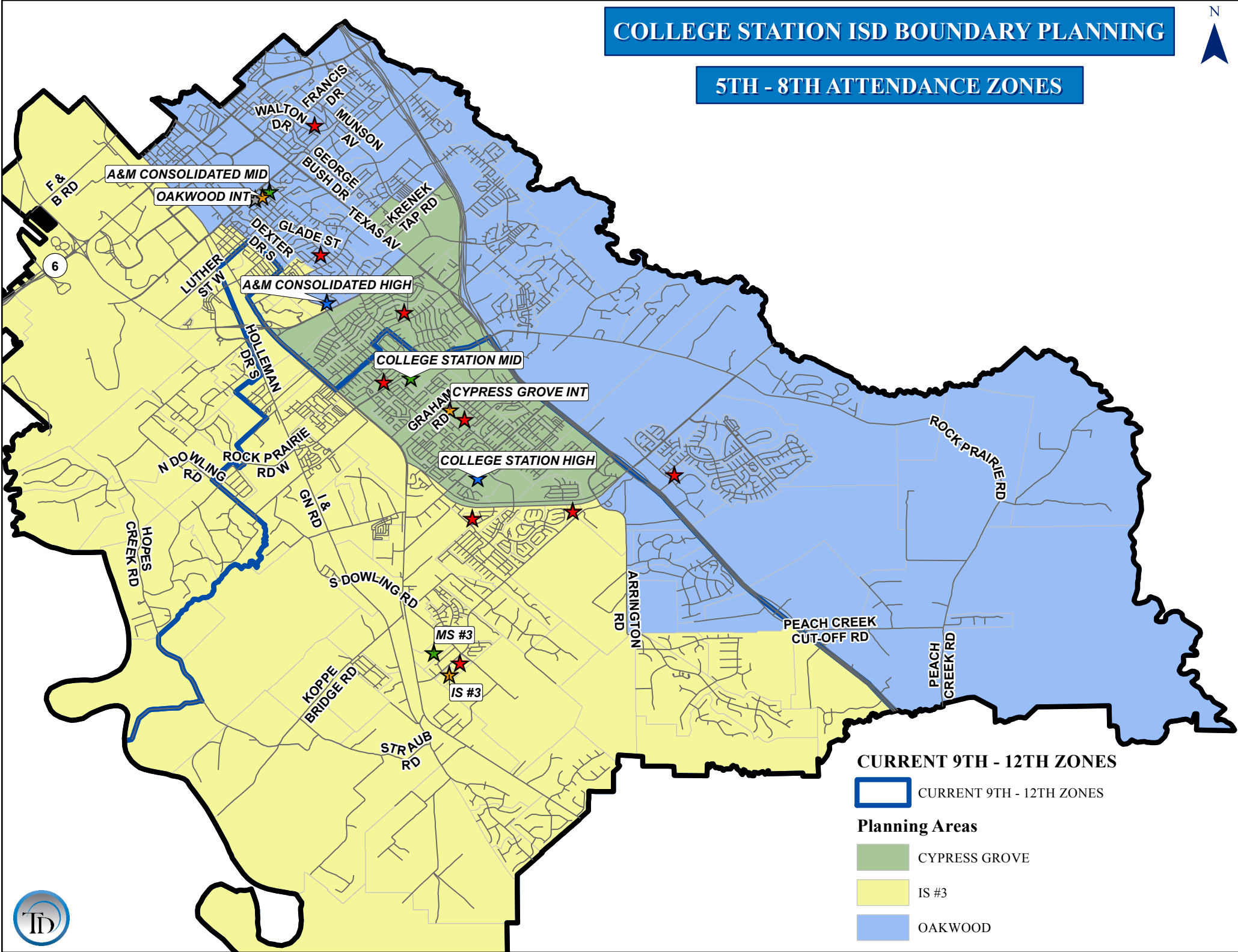
Nantucket to **OW/AMCMS/Consol**

Continuity

COLLEGE STATION ISD BOUNDARY PLANNING



5TH - 8TH ATTENDANCE ZONES



CURRENT 9TH - 12TH ZONES

 CURRENT 9TH - 12TH ZONES

Planning Areas

 CYPRESS GROVE

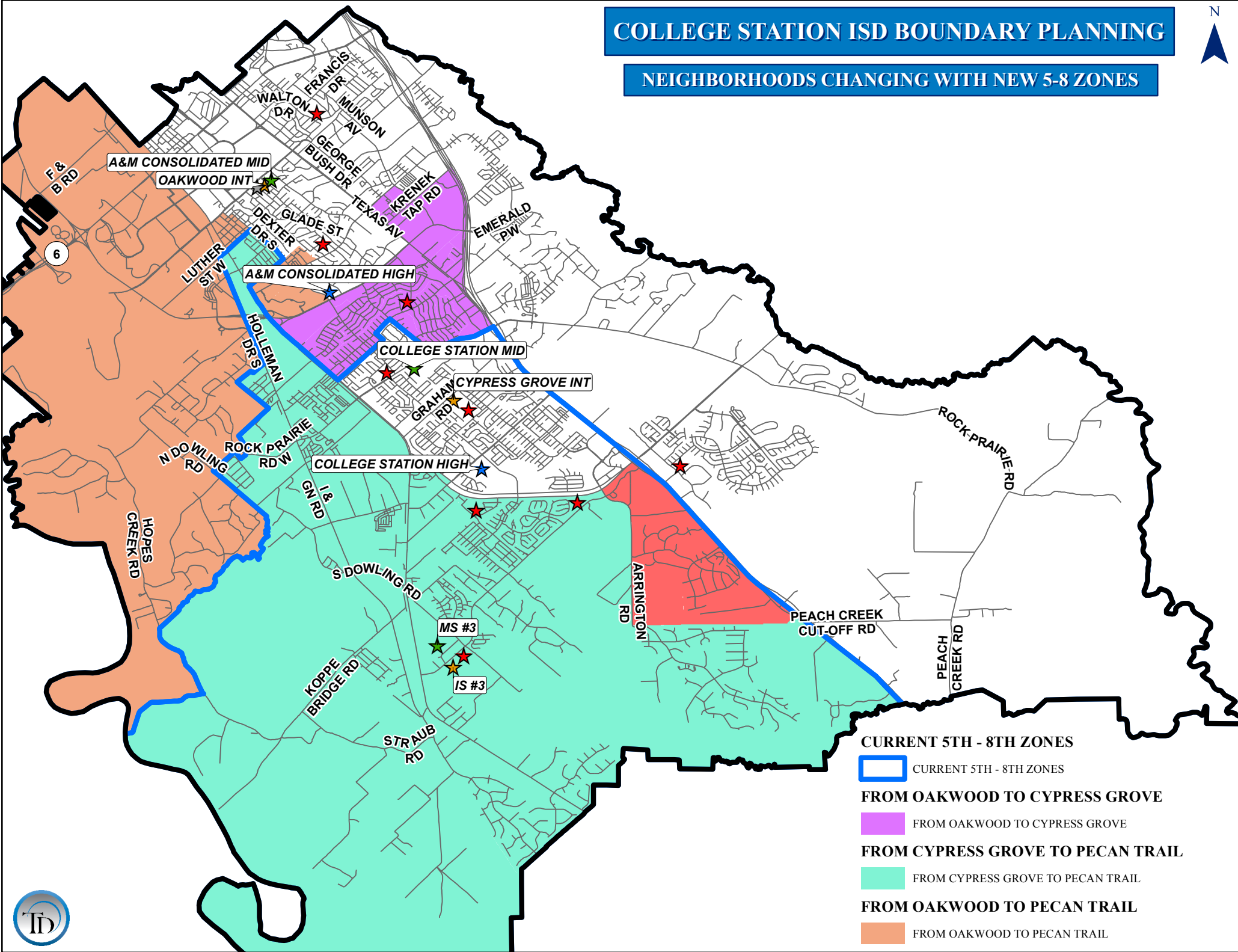
 IS #3





 OAKWOOD



COLLEGE STATION ISD BOUNDARY PLANNING

NEIGHBORHOODS CHANGING WITH NEW 5-8 ZONES



- CURRENT 5TH - 8TH ZONES
-  CURRENT 5TH - 8TH ZONES
-  FROM OAKWOOD TO CYPRESS GROVE
-  FROM CYPRESS GROVE TO PECAN TRAIL
-  FROM OAKWOOD TO PECAN TRAIL
- FROM OAKWOOD TO PECAN TRAIL



COLLEGE STATION ISD

Intermediate & Middle School School Forecast Report/Grade Report

SCHOOL	CAPACITY	2015/16	2016/17	2017/18	2018/19	2019/20	2020/21	2021/22	2022/23	2023/24	2024/25	2025/26
CYPRESS GROVE	920	741	755	786	852	868	859	855	870	875	882	870
IS #3	925	563	601	658	732	755	767	773	813	836	866	868
OAKWOOD	920	623	624	670	690	723	707	705	707	722	736	743
TOTAL	2,765	1,927	1,980	2,114	2,274	2,346	2,333	2,333	2,390	2,433	2,484	2,481

SCHOOL	5	6	TOTAL	CAPACITY	UTILIZATION	ED	%ED
CYPRESS GROVE	372	369	741	920	80.5%	260	35.1%
IS #3	298	265	563	925	60.9%	212	37.7%
OAKWOOD	311	312	623	920	67.7%	222	35.6%
TOTAL	981	946	1,927	2,765	69.7%	694	36.0%

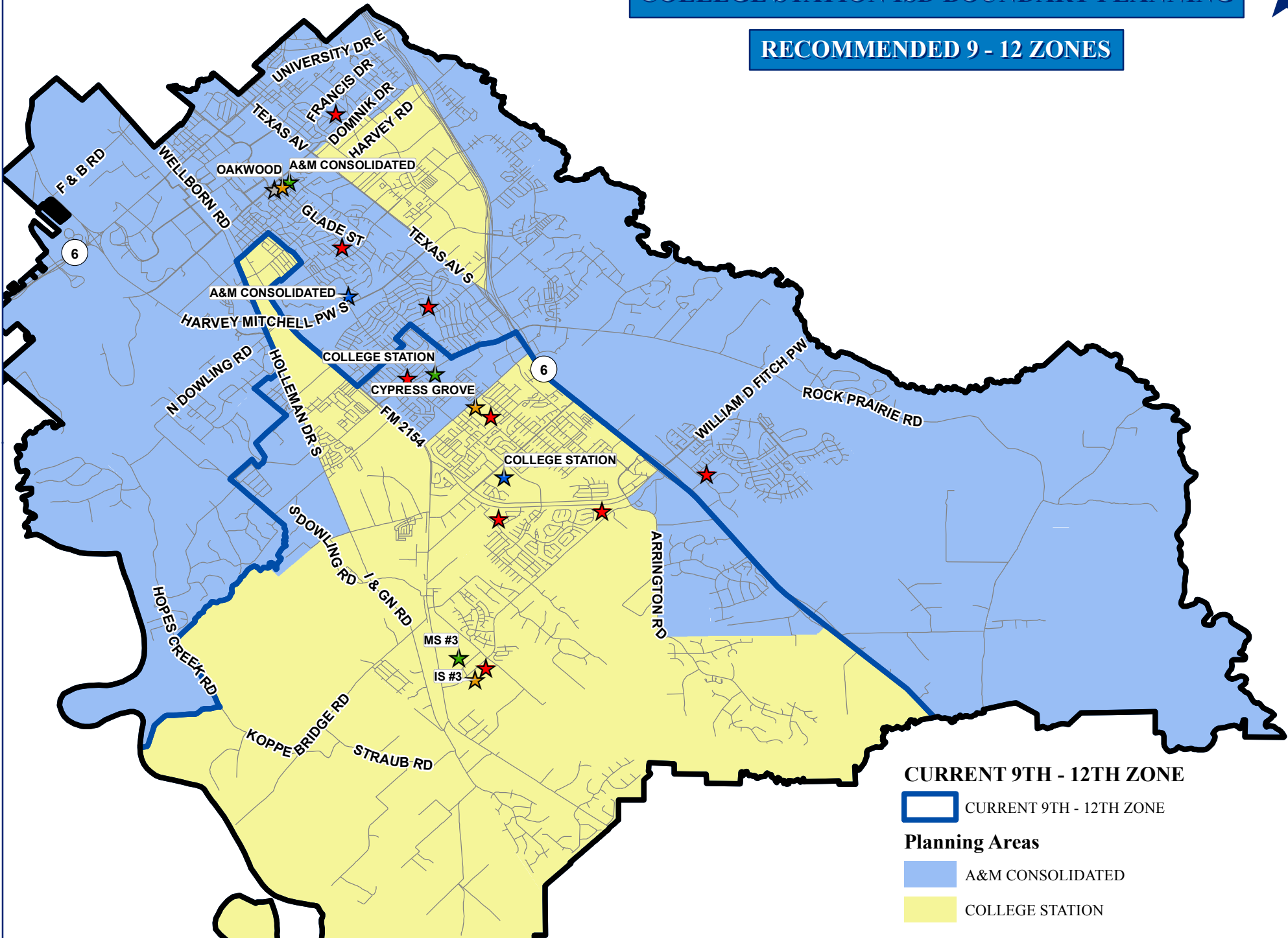
SCHOOL	CAPACITY	2015/16	2016/17	2017/18	2018/19	2019/20	2020/21	2021/22	2022/23	2023/24	2024/25	2025/26
A&M CONSOLIDATED	920	594	586	612	652	684	727	787	751	748	761	752
COLLEGE STATION	940	708	714	736	777	811	865	891	881	871	891	895
MS #3	925	518	577	652	691	785	879	903	906	925	968	984
TOTAL	2,785	1,820	1,877	2,000	2,120	2,280	2,471	2,581	2,538	2,544	2,620	2,631

SCHOOL	7	8	7TH-8TH	CAPACITY	UTILIZATION	ED	%ED
A&M CONSOLIDATED	309	285	594	920	64.6%	207	34.8%
COLLEGE STATION	364	344	708	940	75.3%	232	32.8%
MS #3	268	250	518	925	56.0%	178	34.4%
TOTAL	941	879	1,820	2,785	65.4%	617	33.9%

COLLEGE STATION ISD BOUNDARY PLANNING

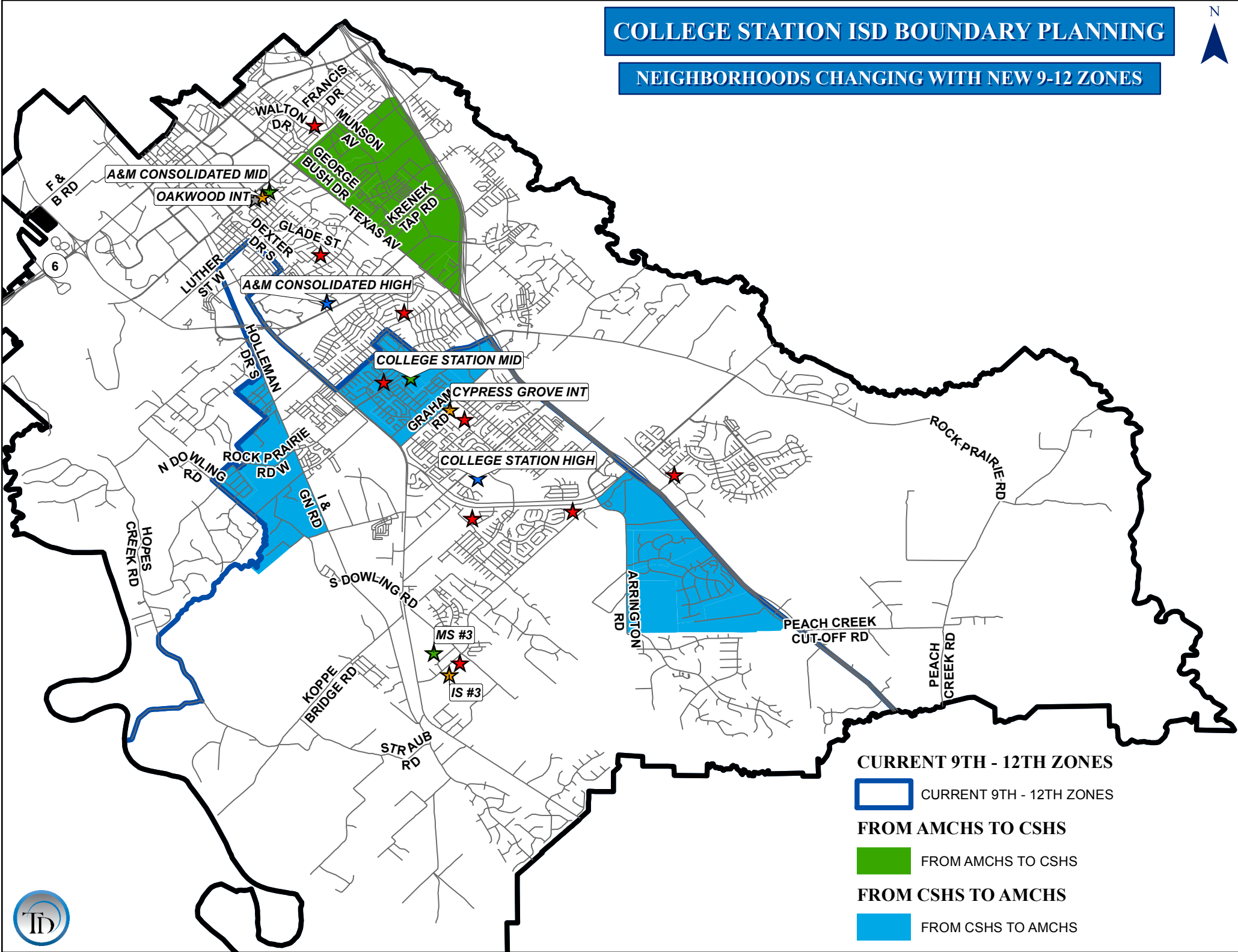


RECOMMENDED 9 - 12 ZONES






COLLEGE STATION ISD BOUNDARY PLANNING

NEIGHBORHOODS CHANGING WITH NEW 9-12 ZONES



CURRENT 9TH - 12TH ZONES

-  CURRENT 9TH - 12TH ZONES
-  FROM AMCHS TO CSHS
-  FROM CSHS TO AMCHS



COLLEGE STATION ISD

Recommended High School Forecast & Grade Report

SCHOOL	CAPACITY	CURRENT	2016/17	2017/18	2018/19	2019/20	2020/21	2021/22	2022/23	2023/24	2024/25	2025/26
A&M CONSOLIDATED	2,400	1,786	1,733	2,008	2,070	2,157	2,267	2,390	2,545	2,681	2,801	2,857
COLLEGE STATION	1,800	1,745	1,859	1,830	1,938	2,094	2,238	2,422	2,594	2,744	2,872	2,963
TOTAL	4,200	3,531	3,592	3,838	4,008	4,251	4,505	4,812	5,139	5,425	5,673	5,820

Recommended High School Grade Report

SCHOOL	8	9	10	11	12	8TH-11TH	9TH-12TH	CAPACITY	UTILIZATION	ED	%ED
A&M CONSOLIDATED	462	513	453	474	440	1,902	1,880	2,400	78.3%	546	29.0%
COLLEGE STATION	417	477	490	396	341	1,780	1,704	1,800	94.7%	504	29.6%
TOTAL	879	990	943	870	781	3,682	3,584	4,200	85.3%	1,050	29.3%

ALTERNATE ZONES MIDDLE SCHOOL FEEDER REPORT

MIDDLE SCHOOL TO HIGH SCHOOL ZONE	7th GRADE	8th GRADE	7 - 8 TOTAL	7th GRADE %	8th GRADE %	7-8 GRADE %
A&M CONSOLIDATED MIDDLE	309	285	594			
A&M CONSOLIDATED HIGH	266	238	504	86%	84%	85%
COLLEGE STATION HIGH	43	47	90	14%	16%	15%
COLLEGE STATION MIDDLE						
COLLEGE STATION MIDDLE	364	344	708			
A&M CONSOLIDATED HIGH	168	170	338	46%	49%	48%
COLLEGE STATION HIGH	196	174	370	54%	51%	52%
MS #3						
MS #3	268	250	518			
A&M CONSOLIDATED HIGH	44	54	98	16%	22%	19%
COLLEGE STATION HIGH	224	196	420	84%	78%	81%